

Transportation Management Systems

Centracs[®] MMS

What, exactly, is Centracs MMS?

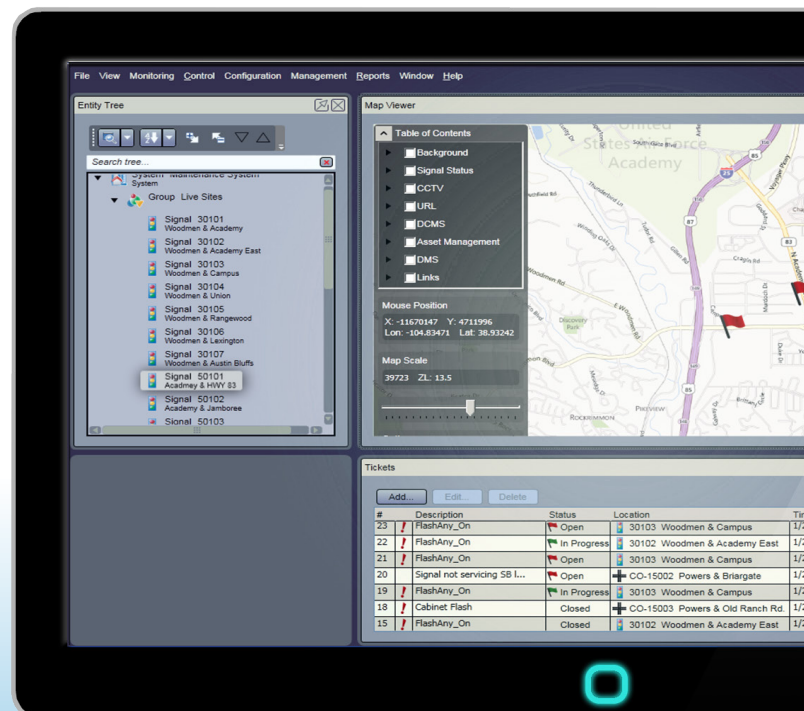
Centracs MMS is a centralized Geographic Information System (GIS)- based asset management, maintenance, and technician support software solution. Centracs MMS system solution works seamlessly with an ATMS system to actively manage field asset, preventative maintenance, and performance measures programs.

Why do agencies use Centracs MMS?

Centracs MMS allows ITS and signal maintenance organizations to track assets in real-time through the entire asset life cycle. Centracs MMS provides tools and features specifically intended to support signal and ITS maintenance operations. It is also offered as a stand-alone system that can be used by any agency.

How does MMS benefit the driving public?

Centracs Adaptive helps transportation agencies and DOTs to proactively monitor the status of traffic management equipment, ensuring proper and efficient operation of the roadway network. This means more efficient roadways and safer commutes for the driving public.





Description

Centracs MMS allows ITS and signal maintenance organizations to track assets in real-time through the entire asset life cycle. Centracs MMS provides tools and features specifically intended to support signal and ITS maintenance operations. It is offered as a stand-alone system and can be used by any agency, even if they don't use other Econolite products. It can also operate as an add-on module to the Centracs ATMS system to provide even greater functionality and benefit to agencies as it monitors, measures and responds to problems and creates trouble tickets and dispatches technicians even when no one else is paying attention. Centracs MMS comes with all the standard Centracs user interface tools such as the Container based User Interface, GIS maps, reports status, and other tools. Additionally, Centracs MMS offers specific tools for the ITS/ Signal Maintenance organization.

Benefits

- Centracs MMS is built on the same proven and popular platform as our Centracs ATMS and Centracs DCMS systems providing ease of use and flexibility to the user
- Support for a wide variety of mobile web browsers means that field technicians will be able to use smart-phones and similar devices to manage and report their work activities as well as equipment movements directly from the field or back in the office
- Real-time data logging, display, archiving, reporting, and notifications
- At-a-glance map view of active work-orders
- Scheduled email report delivery keeps users informed even when they are not logged into the system
- User definable preventative maintenance work activities, plans, and schedules
- Centracs MMS can be used by any agency, even if they don't use other Econolite products
- Available as a stand-alone system that can also be combined with Centracs ATMS or Centracs DCMS requiring no additional software
- With the expertise of Econolite and Aegis behind Centracs MMS, agencies can be assured that they will receive the highest quality of support and service

System Requirements

- The following are requirements for running Centracs MMS:
 - Centracs 1.9.0 or newer
 - Server Class Application Server
 - Microsoft Windows Server
 - Microsoft SQLServer 2008
- Full benefits with Centracs MMS will be realized when field technicians have access to smart phones or other mobile devices with Internet web browser support.
- Specific computing hardware requirements will vary based on customer needs and selected options.

