

# Sensors for Traffic Detection

## TotalVu<sup>HD</sup>

---

### What, exactly, is TotalVu HD?

TotalVu HD is a video viewer software whose main function is to display a tile of multiple camera streams or video feeds. It can display matrices from 1x2 (2 streams) up to 3x4 (12 streams). The source video for each tile of a matrix can be an RTSP stream from Autoscope Vision, other RTSP cameras, or pre-recorded video such as an mp4 or an avi file.

Simple configuration pages enable the user to manage a list of video streams, as well as a list of various sized views. Some very useful functions include the ability to quickly set Full Screen for any particular stream, drag and drop from one position to another to quickly reorder, or rotate into Full Screen through the various images of the matrix.

### Why should agencies use TotalVu HD?

Agencies that have multiple intersections of Autoscope Vision can easily set up organized views of traffic video, taking advantage of the high-quality HD image of Vision. The agency can set up multiple video streams via tiled views, allowing the monitoring of traffic flow along a corridor. The system is not just limited to Vision, any camera providing an RTSP stream can be viewed, including legacy Encore, RackVision or Solo Terra video, as well as CCTVs.





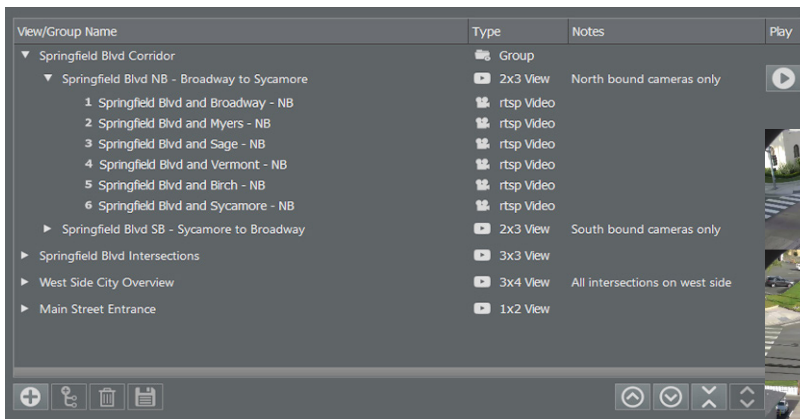
## Description

TotalVu HD allows you to organize and stream multiple video feeds from Autoscope Vision, other RTSP based cameras, or from stored video files in many formats (such as .avi, .mov, .mp4, .webm, and .wmv). It can be used to monitor groups of intersections or specific intersections along a corridor.

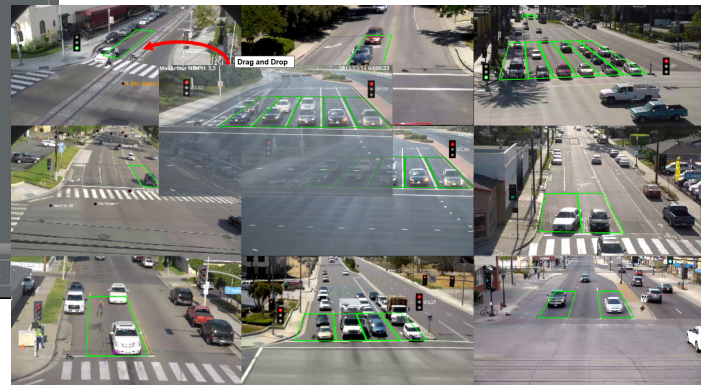
Integration to Autoscope Vision automates some processes such as importing camera feeds and saving snapshots. Each tile can be set to any camera feed, and each can be set to fullscreen, or setup to rotate between all images.

## Requirements

- Windows 7/10
- Intel Core i3 CPU or equivalent
- 4 GB RAM
- 1280 x 1024 pixel display
- 400 MB free disk space
- 100 Mb Ethernet interface
- Autoscope Vision integration requires the use of Supervisor V2.4 or later



*\*Easily manage and play videos in the Stored Groups/Views Window*



*\*Drag and drop from one tile to another*

## TotalVu HD Key User Features

- Auto-sync with Vision Camera listing in Autoscope Supervisor Software
- Drag and drop to rearrange streams in a view
- Double-click to set any video to full-screen
- Alternate full-screen through each video
- Save snapshots of individual video images or of the full matrix view
- Set up hierarchical groups of views

