



Product Type: Aries®

Reference: AN2090
Date: 22 February 2008

DDE-to-TCP Network Enhancement

Purpose

This Application Note describes a new network enhancement to **Aries®** (Aries) and tells you how to use it.

Features and Benefits

With the Aries DDE-to-TCP Network Enhancement:

- You can use Dynamic Data Exchange over a network, without NetDDE.
- Remote Aries client applications (for example, Aries Zone Manager or Split Monitor Report) can actively communicate with an Aries Communications Server installed on another computer.

Applications

To enable communication between a remote Aries client and an established Aries Communications Server, obey the procedure that follows:

1. Open the Aries DDE Server application from the Aries Communications Server:
 - a. Click on the “Launch” drop-down menu.
 - b. Click “Aries DDE Server.”

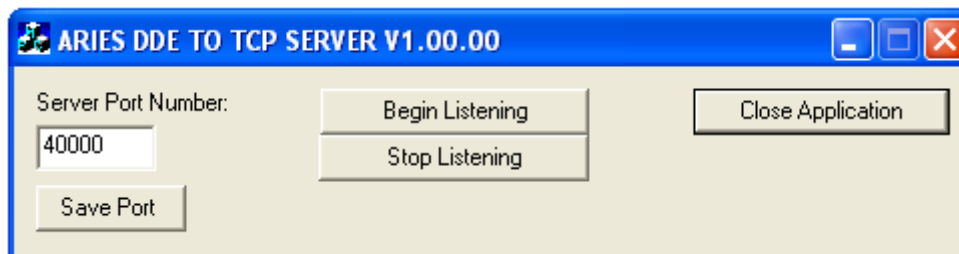


2. In the “Server Port Number” field, enter the Port Number (1-65535) on which the application will listen for connections from the remote clients.
3. To save the connection information, click [Save Port].
4. For the application to start accepting connections from the remote Aries clients, click [Begin Listening].
NOTE: Do NOT click [Close Application].



Aries

AN2090: DDE-to-TCP Network Enhancement



5. On the remote client computer:
 - a. Launch Aries Zone Manager.
 - b. Click the “Launch” drop-down menu.
 - c. Click “Client DDE Server.”



6. In the Aries DDE Client Server application dialog, there are fields that indicate where the application can expect to communicate with the computer that hosts the Aries Communications Server. Use this information to:
 - a. Enter the applicable computer IP address.
 - b. Then enter the port number selected in Step 2.

If you are NOT sure of the IP address of your host computer:

- a. Go to the Command Prompt of your computer.
- b. Type “ipconfig” at the prompt.
This should indicate under what IP address your computer is currently configured to run.

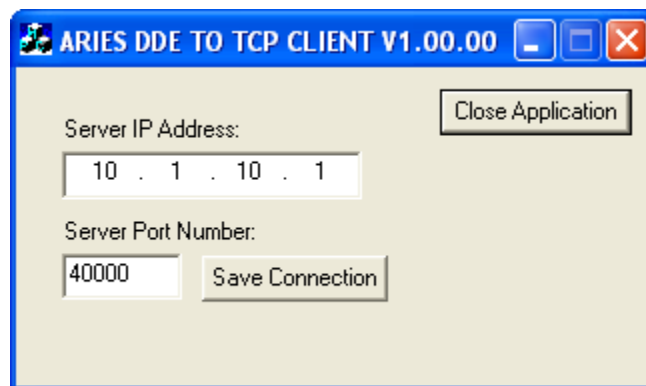
7. IMPORTANT

- Do NOT activate an Aries Communication server on the Client Computer.
- For the Aries DDE-TCP Client to work, do NOT activate NetDDE.



Aries

AN2090: DDE-to-TCP Network Enhancement



8. Click [Save Connection]. While the Aries Communications Server is running, you can *minimize* this Application, but do NOT *close* it.
9. When communications with the Aries Communications Server are no longer needed, click [Close Application].
NOTE: Do NOT click [Close Application] until you complete your work — otherwise, communication with the server side will be disconnected.

More Information

This enhancement has two new executable files in the installed Aries folder:

- ServerListenerDDE.exe
- ClientListenerDDE.exe

These files are added automatically when Aries Version 3.30 Beta 1, and higher, are installed.

With both applications configured correctly, with the procedure above, communications will continue between the remote Aries client and the Aries Communications Server; no more changes are required.

When the program is on the same host computer as the Aries Communications Server, operate the Aries Zone Manager as usual.